

2017



Letter to Airmen

**Special flight procedures for Falcon Field (FFZ), effective 6:00 AM MST
October 26 to 6:00 PM MST October 29, 2017**

To view or download this LTA, visit www.copperstate.org

Letter to Airmen

2017 COPPERSTATE FLY-IN

Falcon Field Airport (FFZ)
Mesa, Arizona
October 27 – 28, 2017

In anticipation of increased air traffic at Falcon Field Airport (FFZ) during the 2017 COPPERSTATE Fly-In the following VFR procedures will be used to enhance safety and minimize air traffic delays. Text and graphic depictions of these procedures are also available at the COPPERSTATE website: www.copperstate.org.

AIRPORT TRAFFIC CONTROL TOWER

The Federal Aviation Administration will operate the FFZ Airport Traffic Control Tower from 0600L to 2100L, and use Special Event VFR Arrival Routes (see below), on the following days and times:

Day	Date	Time
Friday	October 27, 2017	0700 – 1700L (1400 – 0000 UTC)
Saturday	October 28, 2017	0700 – 1700L (1400 – 0000 UTC)

FREQUENCIES

ATIS	118.25
FFZ Tower North (Rwy 4L/22R)	119.7
FFZ Tower South (Rwy 4R/22L)	124.6
FFZ Ground	121.3
Parking Control	122.95
Phoenix Approach North	120.7
Phoenix Approach South	123.7

NO IFR/VFR PRACTICE APPROACHES AUTHORIZED

Due to anticipated traffic volume, IFR/VFR practice approaches will not be authorized during the following dates and times:

Day	Date	Time
Friday	October 27, 2017	0600 – 1800L (1300 – 0100 UTC)
Saturday	October 28, 2017	0600 – 1800L (1300 – 0100 UTC)

HELICOPTER ADVISORY

Use CAUTION for high-density helicopter operations at or below 500' AGL within the FFZ Class "D" Airspace.

Helicopter Yankee One Pattern

Due to temporary event designated camping area, the Yankee One Pattern will not be authorized from 0600L (1300 UTC) Thursday, October 26 through 1800L (0100 UTC) Sunday, October 29.

AIRPORT AND TOWER REMAIN OPEN DURING THE FLY-IN

The Falcon Field Airport (FFZ) and control tower will NOT be closed for aerobatic air shows at any time during the 2017 COPPERSTATE Fly-In. There will, however, be non-aerobatic aircraft demonstrations that may occasionally cause short delays for arriving and/or departing aircraft.

TAXIWAY BRAVO OPERATIONS

Single engine piston aircraft may be asked to stay to the right of the taxiway bravo centerline when operating on taxiway bravo between the runways in order to allow bi-directional taxiing operations. Pilots who are not able or unwilling to comply with this instruction should advise ATC as soon as practicable.

FLIGHT RESTRICTIONS

Due to the high volume of traffic expected to participate in the COPPERSTATE FLY-IN, touch-n-go operations, low approaches, and fly-bys may be restricted and will only be approved on a workload-permitting basis. Aircraft intending to operate in formations and to deploy smoke in the Falcon Class Delta airspace are required to obtain prior permission from the tower at least one hour in advance of their planned arrival or departure time. The tower telephone number is (480) 981-0990. The request should be made on initial contact and may be denied due to workload and traffic.

PHOENIX MODE C VEIL

Transponder and altitude reporting equipment and use requirements prescribed in 14 CFR 91.215b(2) within the Phoenix Class B Airspace Mode C veil remain in effect during the COPPERSTATE Fly-In.

AIRPORT OPERATIONS WHEN THE TOWER IS CLOSED

When the control tower is closed (2100-0600 MST), the airport will remain open and revert to its usual non-towered status. There will be considerable vehicle and pedestrian traffic on the airport during the event, and pilots are requested to be extremely vigilant and taxi at slow walking speed with all lights on. When taxiing, pilots should broadcast their intentions on CTAF, 124.6.

FLY-IN AIRCRAFT PARKING

To provide the best possible experience for Fly-In visitors, parking on the main show ramp (**south** of RWY 4R/22L) is limited to Exhibitor/Judged aircraft (Antique, Classic, or Contemporary), or other aircraft that may be of special interest to the public. Aircraft not meeting these criteria can expect to park in the General Aircraft Parking area, located **north** of RWY 4L/22R.

To assist in identification of Exhibitor/Judged aircraft, pilots are requested to advise tower on initial contact of parking north or south. If directed to a parking area not appropriate for your aircraft, contact an Aircraft Parking volunteer on a "Follow Me" golf cart 122.95 and every effort will be made to accommodate you.

TRANSIENT (NON-PARTICIPATING) AIRCRAFT PARKING

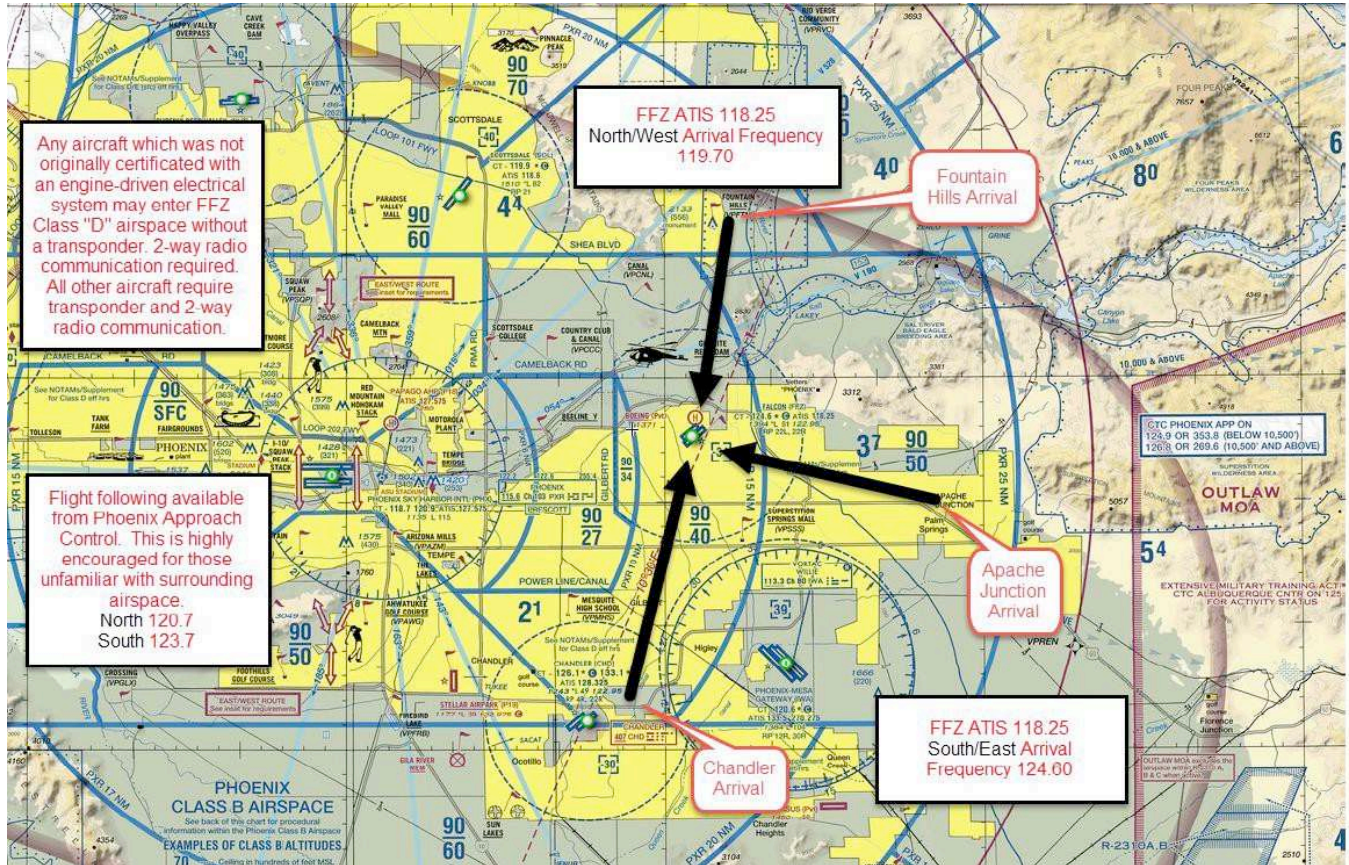
Personal and business transient aircraft not attending or otherwise affiliated with the COPPERSTATE Fly-In will be parked in the two tie down rows directly in front of the terminal building, in the three eastern most painted tie down spots. These operations are to be coordinated with Falcon Executive Aviation.

AIRCRAFT FUELING

To ensure the safety of spectators, the self-service 100LL avgas pumps will be closed to the public for the duration of the event; fuel will be available from fuel trucks only. To avoid departure delays, pilots requiring fuel should contact a fuel truck as soon as practical after arrival at FFZ or contact 122.95, or call (480) 832-0704/2582 or after 6 p.m. call (602) 885-3406.

VFR ARRIVAL PROCEDURES

Unless otherwise authorized by the tower, fixed-wing aircraft arriving at Falcon Field Airport should use the appropriate Event VFR Arrival Routes. Pilots should review and be thoroughly familiar with these procedures prior to departure for the COPPERSTATE FLY-IN.



NOTE: After being released by Falcon Ground control, all arriving aircraft should MONITOR COPPERSTATE Parking Control on 122.95 and use this frequency to request parking assistance or information. When taxiing on airport ramp/apron areas or within the designated Fly-in paved parking, always taxi at walking speed and, if possible, under the direction of a flagman and/or "follow me" vehicle.

VFR flight plans should be activated or cancelled using FSS frequency in the air or by phone call upon landing.

VFR DEPARTURE PROCEDURES

To ensure the safety of spectators, all aircraft taxiing in the aircraft parking areas are to be accompanied by at least one “wing walker” to ensure that the propeller area remains clear during engine start and taxi. Do not start engines without first enlisting the aid of a wing walker. The wing walker is to accompany the aircraft until you have taxied clear of all areas where spectators are present.

1. Obtain departure information via ATIS on 118.25.
2. Follow the directions of flagmen, and **MONITOR** Parking Control on 122.95 until reaching the parallel taxiway (Delta or Echo).
3. **Hold short of the parallel taxiway (Delta or Echo).** When number one, **CONTACT** Ground Control on 121.3 for taxi instructions, stating your aircraft identification and position and departure direction.
4. **When instructed by Falcon Ground Control, change to and MONITOR** Falcon Tower on 124.6 Rwy 4R/22L or 119.7 Rwy 4L/22R. *Hold short of the runway and the tower will call you* and clear you for take -off when able.